

HN-100ah 12V100Ah/C20



Hind - Deep Cycle

This range (deep cycle Lead-Carbon with poly gel) is use function activated carbon and graphene as carbon materials , with heavy strong grids that is made of a different chemical for the plates active paste material and a electrolyte stronger slightly than normal battery electrolyte. It enhances a superior performance of high power output and more than 900 cycles life at 80%DOD, it is more suitable for application of PSOC.

Applications

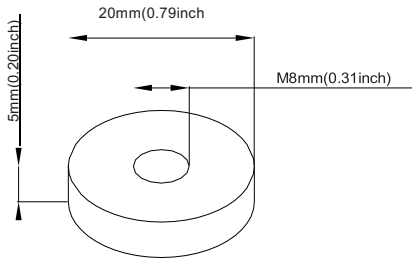
- Solar Power Generation
- Energy Storage System
- Wheel Chair
- Wind Energy Storage System
- Home Energy Storage System
- Smart power & micro-grid System
- Generation and Hybrid Energy
- Medical Equipment
- Distributed Energy Storage System

General Features

- Better discharge characteristics than normal VRLA batteries.
- Non-Spillable construction design.
- ABS containers and covers(UL94HB, UL94V-0) optional.
- Safety valve installation for explosion proof.
- Higher safety & reliable construction.
- Extra durability and deep cycle ability for heavy demand applications.
- Low self discharge characteristic.
- Flexibility design for multiple install positions.

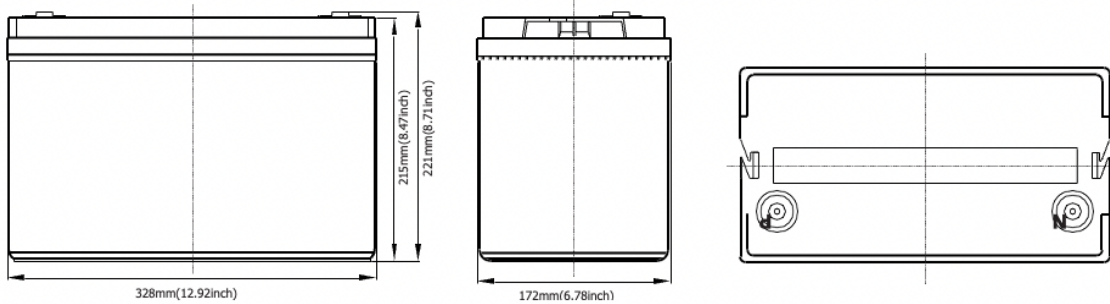
Construction

- Component Raw material
- Positive Lead dioxide
- Negative Lead
- Container ABS
- Cover ABS
- Sealant Epoxy Resin
- Safety valve EPDR
- Terminal.....Lead
- Separator..... Fiber glass
- Electrolyte..... Sulfuric acid



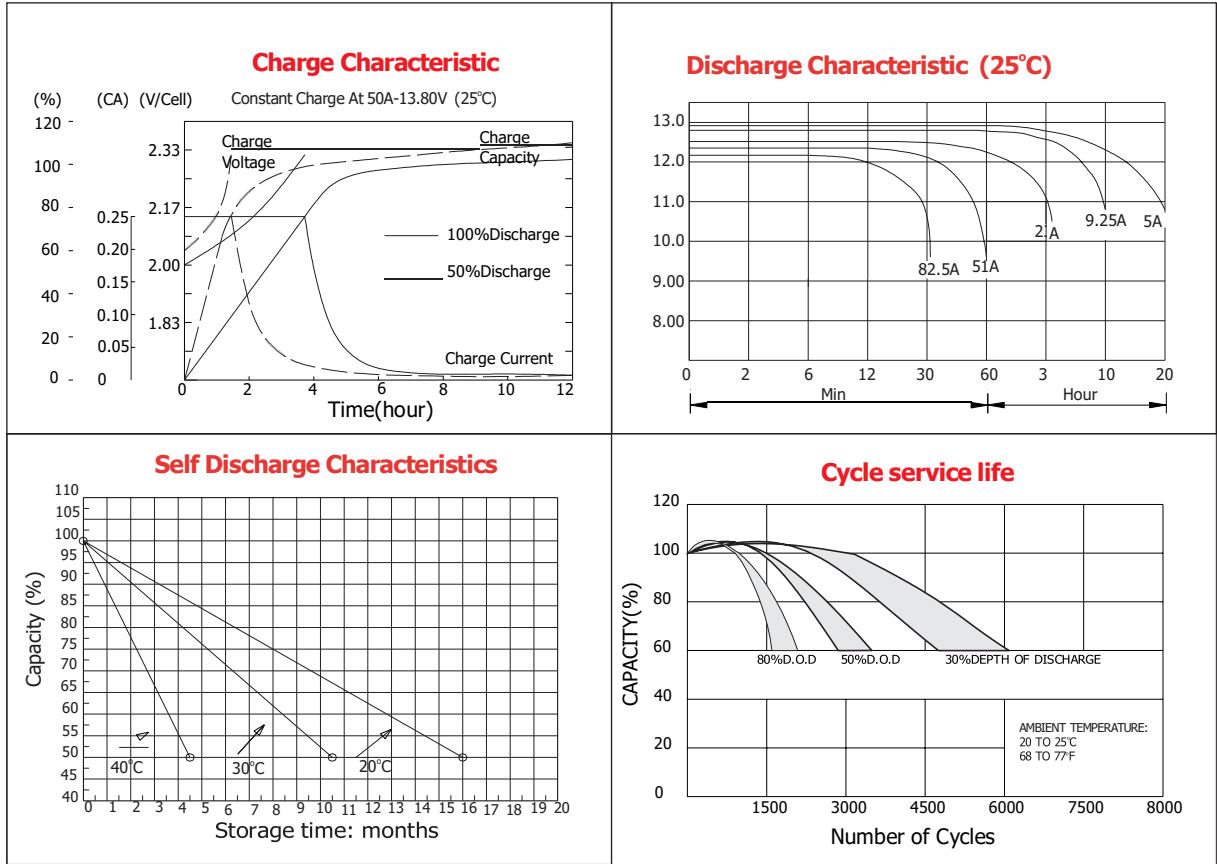
Standard Terminal Dimensions

(Optional terminal please check terminal information page)



Battery Model	HN-100ah			
Designed Cycle Life	> 2000 cycles 80%DOD @ -0.5CA to 9.6V			
Capacity(25°C)	20HR(5.0A,1.75V)	10HR(9.25A,1.75V)	5HR(15.3A,1.75V)	1HR(51.1A,1.75V)
	200Ah	185Ah	155Ah	105Ah
Dimensions	Length	Width	Height	Total Height
	330mm(13.0inch)	172mm(6.77inch)	215mm(8.46inch)	221mm(8.70inch)
Approx. Weight	31.0kgs (68.35 lbs)			
Internal Resistance	Full charged at 25°C :0.0005 Ohm			
Self Discharge	Self discharge < 3% per month at (25°C)			
Capacity Affected by Temp.(20HR)	40°C	25°C	0°C	-15°C
	102%	100%	85%	65%
Charge Voltage(25°C)	Cycle use		Float use	
	14.4-14.8V(-30mV/ °C), max. Current: 50A		13.6-13.8(-20mV/ °C)	

HN-100ah 12V100Ah/C20



Constant current discharge ratings-amperes at 25°C

F.V/Time	1HR	2HR	3HR	4HR	5HR	8HR	10HR	20HR	48HR	72HR	100HR
1.60V	56	33	24	19	16	11.0	9.7	5.3	2.2	1.5	1.13
1.67V	54	32	24	19	16	10.9	9.6	5.2	2.2	1.5	1.11
1.70V	53	31	23	19	16	10.7	9.4	5.1	2.2	1.5	1.10
1.75V	51	30	23	18	15	10.5	9.3	5.0	2.1	1.5	1.08
1.80V	49	29	22	17	15	10.2	9.0	4.9	2.1	1.4	1.05
1.85V	45	27	20	16	14	9.7	8.6	4.7	2.0	1.4	1.01

Constant power discharge ratings-watts at 25°C

F.V/Time	1HR	2HR	3HR	4HR	5HR	8HR	10HR	20HR	48HR	72HR
1.60V	104	62	46	37	31	22	19.0	10.3	4.4	3.0
1.67V	103	61	46	36	31	21	18.8	10.2	4.4	3.0
1.70V	101	60	45	36	30	21	18.6	10.0	4.3	2.9
1.75V	97	58	44	35	21	21	18.3	9.9	4.2	2.9
1.80V	93	56	42	34	29	20	17.8	9.6	4.1	2.8
1.85V	86	52	40	32	28	19	17.1	9.2	4.0	2.7

